

BY HENRICK IBSEN
IN A NEW TRANSLATION BY LANFORD WILSON

Directed by Peter Marston Sullivan
Produced by Peter Blair

Partially supported by grants from



Illinois
ARTS
Council
ILLINOIS DEPARTMENT OF CULTURAL SERVICES



Driehaus
Foundation

Gaylord and Dorothy
Donnelley Foundation

BoHo Theatre presents

GHOSTS

By Henrik Ibsen

In a new translation by Lanford Wilson

Ghosts is presented by special arrangement with
Dramatists Play Service, Inc. New York.

CAST

Saren Nofs-Synder
Steve O'Connell
Charles Riffenburg IV
Florence Ann Romano
Sean Thomas

MRS. HELEN ALVING
REVEREND MANDERS
OSWALD ALVING
REGINA ENGSTRAND
JAKKOB ENGSTRAND

PRODUCTION TEAM

P. Marston Sullivan
Peter Blair
Thomas Samorian
Stephanie Wilson
Anders Jacobson
Judy Radovsky
Katy Peterson
Lewis Miller
Sarah Putnam
Brooke Mullen

DIRECTOR
PRODUCTION MANAGER
ASST. PRODUCTION MANAGER
STAGE MANAGER
SCENIC DESIGNER
SCENIC DESIGNER
LIGHTING DESIGNER
SOUND DESIGNER
COSTUME DESIGNER
PRODUCTION INTERN

Truth, Beauty, Freedom, Love

The four pillars of BoHo

As we choose each season, the Artistic Advisory Committee here at BoHo (made up of the Artistic Director, Executive Director, Associate Artistic Director, and various company members) considers a wide variety of artistic pieces in its selection.

It casts a net out as wide as possible to see what choices might be interesting for the new season. One of the most integral parts of choosing the season, though, is how a given piece exemplifies one of the pillars of BoHo. These pillars (Truth, Beauty, Freedom, and Love) were implemented from the start of BoHo as a way to maintain the Bohemian ideals while allowing for structure in the selection process. After many other elements are considered, the Artistic Director chooses a season where each piece represents a pillar (four pillars; four shows in a season).

CAST BIOGRAPHIES



SAREN NOFS-SNYDER | MRS. HELEN ALVING

Saren is pleased to make her debut with BoHo Theatre Company. Most recently she was seen as Sarah in the critically acclaimed *Return to Haifa (The Play That Never Was)* at Next Theatre. A Jeff Nominee, Saren has worked locally with Chicago Shakespeare Theatre, Remy Bumpo, The Silk Road Theatre Project and Circle Theatre, among others. Regionally: Utah Shakespearean Festival, Kansas City Rep, Artists Repertory Theatre, Riverside Shakespeare Theatre, Pioneer Theatre Company and many others. Roles she looks forward to playing include Masha in *Three Sisters*, Annie in *The Real Thing* and Queen Margaret in *Henry VI, iii*. Saren earned an MFA in Acting from the University of Missouri, Kansas City.



STEVE O'CONNELL | REVEREND MANDERS

Steve is excited to be working with Boho. Acting credits in Chicago include work with Timeline, Theatre Wit, Circle, Light Opera Works, Metropolis, and Infusion Theatre. Regional Credits include performances with Madison Rep, Milwaukee Chamber Theatre, Four Seasons Theatre and the New York Fringe Festival. As a writer, Steve's work has been performed at the New York Fringe Festival and Chicago Sketchfest, and his solo show, *What To Expect* will soon be featured in the upcoming Chicago Fringe Festival in September. Love and thanks to his wife Megan and son Will. www.SteveOConnell.net



CHARLES RIFFENBURG ^{IV} | OSWALD ALVING

Charles holds an MFA in Media Performing Arts from the Savannah College of Art and Design as well as a BFA in Sequential Art. In his time in Chicago, he has been the Marketing Director at Keyhole Theatre Company and the Subscription Campaign Manager at Remy Bumpo Theatre Company, as well as a stage and film actor. As a performer, some of his favorite performances in Chicago have been in *Proof* (Hal) with Keyhole Theatre Company, *Five Women Wearing The Same Dress* (Tripp) and *Red Noses* (Father Toulon) with Hubris Productions, and *Merchant of Venice* (Lancelet/Lorenzo) and *The Tempest* (Antonio/Stephano) with BoHo. Apart from theatre, Charles is also a freelance graphic and web designer. He has been publishing cartoons and comics online and in print for over seven years. His design portfolio is at www.GrabBagMedia.com.



FLORENCE ANN ROMANO | REGINA ENGSTRAND

Florence is honored to be making her Bohemian Ensemble Theatre debut. She is a graduate of Bradley University, with a Bachelor of Science in Performance Theatre. She was born and raised in Chicago – within a big and beautiful Italian family - and has found Chicago to be the only genuine place where her heart truly lives. As an actress, Florence Ann has been pursuing a career in Theatre, Voiceovers, Commercials, Television and Film. She is a proud member of the American Federation of Television and Radio Artists (AFTRA). Her first love is theatre, however, and she prefers to be on stage than anywhere else! Her most recent Chicago theatre credit is *The Laramie Project* (Theatre on the Hill) and her most recent film credit is *Wrong Turn at Tahoe*. Florence Ann would like to thank her family for their love and support, her friends for their humor and positivity, and all those involved in *Ghosts* whom have made this experience a magnificent memory. And, most importantly, here's to YOU – our audience: thank you for letting us into your lives.



SEAN THOMAS | JAKKOB ENGSTRAND

Sean is thrilled to be making his debut with BoHo, but is no stranger to New York audiences. Broadway credits include: Enjolras in *Les Miserables* and Raoul in *Phantom Of The Opera*. National Tour Credits include: Enjolras in *Les Miserables*, Raoul in *Phantom Of The Opera*, and Edmund in *The Lion, The Witch And The Wardrobe*. Off-Broadway Credits include: The Boy in *Three Tall Women* (Vineyard Theatre at The Promenade), Chorus/Tiger understudy in *Threepenny Opera* (Lucille Lortel with Robert Cuccioli and Bea Arthur), and Edmund in *The Lion The Witch And The Wardrobe* (Promenade Theatre and New Victory). Regional credits include: Wolfgang in *Amadeus* (Experimental Theatre Lab), Wallace in *It's Called The Sugarplum* (The Wharf Theatre), Teddy in *The Homecoming* (Salisbury Rep), Mr. Foresight in *Love For Love* (Salisbury Rep), Lord DeWinter in *Three Musketeers* (Salisbury Rep), Pilate in *Jesus Christ Superstar* (Commonwealth Musical Stage), Seymour in *Little Shop of Horrors* (Commander Cabaret Theatre), and Arthur in *Camelot* (The Trawler Theatre). Sean has also appeared on *The Bold And The Beautiful* (CBS), *The Rosie O'Donnell Show* (NBC), and *Violets are Blue* (Columbia Pictures). Sean holds a BFA in Theatre from Shenandoah Conservatory.

PRODUCTION CREW BIOGRAPHIES

ANDERS JACOBSON | SCENIC DESIGNER

Anders is excited to be designing at BoHo for the first time. He has been a member of the Collective with Livewire Chicago Theatre since 2007, where he designed *Lower Debt, Red Angel* (Jeff Nominated - Scenic), *The Collector* (Jeff Recommended), *Soldiers, Wonder of the World** (Jeff Recommended) and *Visionfest 2009**. His other Chicago design credits include *Perfect/Slipping* (Jeff Recommended) (the Side Project Theater), *St. Crispin's Day** (Jeff Nominated - Production) and *Cherry Orchard** (Strawdog Theater Company), *The Pillowman**(Jeff Nominated - Production), *Doubt, Who's Afraid of Virginia Woolf?* (Redtwist Theater), *Sinbad the Sailor*, and *Rough Crossing** (Piccolo Theater), *Peter Pan** (Mudlark Theater), *Sound of Music*, *Les Miserable*, *One Flew Over the Cuckoo's Nest*, *A Midsummer's Night Dream*, *House of Blue Leaves* (Evanston Township High School). He has a BFA in Scenic Design from S.U.N.Y. Purchase College. (* denotes co-design with Judy Radovsky)

LEWIS MILLER | SOUND DESIGNER

Lewis is a graduate of Illinois State University's School of Theater, where he focused on sound design and technical direction. He now works at Ravenswood Studio as an Assistant Project Manager. He works in sound design on the side when the opportunity presents itself. His last design was New Suit Theater Company's premier production of *Jediraq*. Before that he did *Black Comedy* at Piccolo Theater and *Playing with Fire* at BoHo theater before that. He is happy to be back at BoHo working with Katie and Peter again.

KATY PETERSON | LIGHTING DESIGNER

Katy is thrilled to be designing BoHo's lights again. Katy has previously designed *Playing With Fire*, *La Cage Aux Folles*, *I Am My Own Wife* (Jeff nomination), and *The Glorious Ones* for BoHo. Past lighting designs have been seen at the Chopin Theatre, American Theatre Company, the Athenaeum, The Building Stage, Prop Theatre, Theatre On the Lake, Viaduct, Stage Left Theatre, The Side Project, Profiles Theatre, Theatre at the Center (IN), The State Theatre (TX), Lab Theatre (TX), among others. Favorite recent shows include six years of *It's a Wonderful Life: A Live Radio Play* (ATC), *Playing With Fire* (BoHo), and *Nebraska* (BOTC). Katy is the Assistant Lighting Director at The Oprah Winfrey Show. Love to Ben.

SARAH PUTNAM | COSTUME DESIGNER

Sarah is thrilled to make her professional debut with The Bohemian Theatre Ensemble! Sarah earned a BFA in Theatre at Emporia State University and a MFA in Costume Design at Illinois State University before moving to Chicago, where she has been the Costume Coordinator for Northlight Theatre for the past year. Recent designs include *Evita*, *Dracula*, *The Merry Widow*, *A Midsummer Night's Dream*, and *Our Town* at Illinois State University, and *Shakespeare Alive! The Tempest* for the Illinois Shakespeare Festival. Special thanks to Lauren Lowell for her guidance and to the BoHo team for this opportunity.

JUDY RADOVSKY | SCENIC DESIGNER

Judy is excited to be working with BoHo theater! She recently designed Redtwist's *Pillowman** (Jeff nominated - production) which enjoyed four extensions! She designed Strawdog's *St. Crispin's Day** (Jeff nominated - production) and worked on their *Cherry Orchard**. She designed for Piccolo theater's *Rough Crossing**, and has worked for Redmoon theater, participating in their *Sink. Sank. Sunk...* and designing an installation for *Twilight Orchard*. Judy has worked with Livewire, designing *Lower Debt**, *Visionfest 2009** and *Wonder of the World**(Jeff recommended). She also designed a set for *Peter Pan** with Mudlark theater. A painter, sculptor, and metalworker, she has done building renovation and has worked for artists, galleries, and museums. She currently works making mounts for precious artifacts and bones. She has worked on the Field Museum's *Evolving Planet* and *Mammoths and Mastodons*. (* denotes shows co-designed with Anders Jacobson)

P. MARSTON SULLIVAN | DIRECTOR

Marston has worked for the Marriott Theatre for over five years in various capacities including his current position of Artistic Associate, and is a proud Company Member (and Incoming Artistic Director) of BoHo. He earned a BA in Theatre and an MA in Teaching at Trinity University in San Antonio, and an MFA in Directing at Illinois State University. Recent directing projects include *I Am My Own Wife* (co-director), *Playing with Fire*, and *M. Butterfly* at BoHo, *Black Comedy* at Piccolo Theatre, *Monster Garden* at the Gorilla Tango Theatre, *Cry Havoc* at Bailiwick, and *Metamorphoses* at Illinois State University. Special thanks to Andy and Aaron for their support, to Tom and Steve for this amazing opportunity, and to a very talented cast.

STEPHANIE WILSON | STAGE MANAGER

Stephanie Wilson is a recent graduate of Illinois State University and is thrilled to be working on her first show with the Bohemian Theatre Company. Her most recent credits from Illinois State include *Rhinoceros* and *Into the Woods*. Stephanie gives many thanks to everyone at BoHo Theatre and to her family for this wonderful experience!

SPECIAL THANKS

Special thanks go to Michael James for allowing BoHo the latitude to use this space as we will; the Illinois Arts Council, a state agency, the Richard H. Driehaus Foundation, the Gaylord and Dorothy Donnelley Foundation, and The Saints for all their financial and artistic support; Robert Kimmeth and Jean Zuiker for the time and energy they take out their lives to make this company even better; Evanston Township High School and Aaron Carney, Technical Director; The Marriott Theatre: Adam Ford, Production Manager and Rob Rahn, Warehouse Manager; BoHo company members who strive daily to make this a place where artists can learn, grow, and fulfill their dreams; and, anyone else who we may have neglected to thank at the time this was printed.



COMPANY MEMBERS

ARTISTIC DIRECTOR	Stephen M. Genovese
EXECUTIVE DIRECTOR	Thomas J. Samorian
ASSOCIATE ARTISTIC DIRECTOR	Peter Robel
MANAGING DIRECTOR	Ryan Guhde
INCOMING ARTISTIC DIRECTOR.....	Peter Marston Sullivan
ASSOCIATE EXECUTIVE DIRECTOR.....	Peter Blair
CASTING COORDINATOR.....	Stephanie Sullivan
BOARD/COMPANY SECRETARY	Mary Kate Robel
MEDIA DIRECTOR.....	Charles Riffenburg IV
BOARD	Jean Zuiker, Robert Kimmeth
ARTISTIC AFFILIATES	Anthony Apodaca, Brenda Didier, Patrick Ham, Theresa Ham, Jon Steinhagen, A. Scott Williams, and John Zuiker

BECOME A PART OF THE ART!

BoHo Theatre is growing quickly! As we enter our seventh season, we are now a resident company at the new Theater Wit, which increases our capacity and visibility, as well as maintaining our home at the Heartland Studio for new works, rehearsals, and to foster up-and-coming young theatre companies. As part of our transition, we are actively seeking board members to join our outgoing and artistic family.

WHAT DOES BEING A BOARD MEMBER MEAN?

Board members play a strong part in maintaining the BoHo vision and mission, building community relationships, developing resources, and monitoring our image and marketing effectiveness.

WHAT DO I GET BY BEING ON THE BOARD?

Board members get to attend open rehearsals as part of the creative process, participate in talk-backs with casts and designers, attend special receptions for each show, take part in our new works program, be part of creative brainstorming committees, and, of course, get free subscriptions to the BoHo season.

For more information on becoming a board member, pick up a brochure in the lobby, visit www.bohotheatre.com/jointheboard, or contact us at marston.sullivan@bohotheatre.com

HELP US KICK OFF OUR NEW
SEASON AT THEATER WIT WITH...

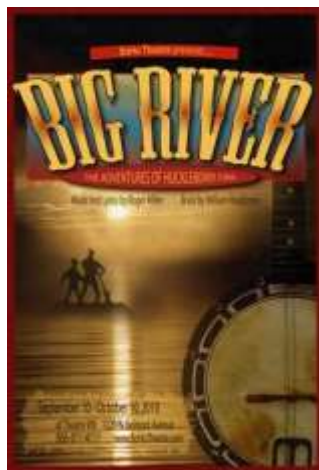
BIG RIVER

A MUSICAL BY ROGER MILLER
AND WILLIAM HAUPTMAN

SEPTEMBER 10 – OCTOBER 10

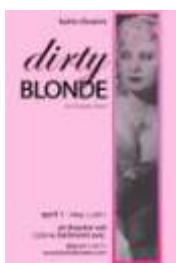
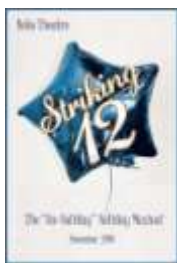
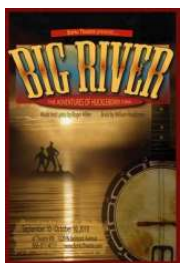
DIRECTED BY P. MARSTON SULLIVAN

Join us for fun and adventure on the Mississippi River with the irrepressible Huck Finn as he helps his friend Jim escape slavery to freedom. Propelled by an award-winning score by county music legend Roger Miller featuring Cajun, gospel, blues, and country music styles, *Big River* is a theatrical celebration of pure Americana.



SUBSCRIBE NOW AND DON'T MISS A MINUTE OF BoHo's 2010/11 SEASON!!

Become a BoHo Subscriber today and lock in your savings for the whole season! An \$80 subscription package includes one ticket to each of our four mainstage shows at 20% off the regular price, PLUS, subscribers will receive a FREE ticket to our limited-run holiday show, *Striking 12*, at the Heartland Studio in December!



For more information on our upcoming shows and season and to purchase a season subscription, visit us online at www.bohotheatre.com!

Bohemian Theatre Ensemble is a not-for-profit 501 (c) 3 organization. Our events and productions are made possible by your generous donations and patronage. Please visit our website at www.bohotheatre.com or speak with our house manager to learn about more ways to contribute time, money, and talent to helping support art in Chicago. Any monetary donations are tax-deductible to the fullest extent of the law. Thank you!