



PRESENTS

# EURYDICE

By Sarah Ruhl

DIRECTOR ..... CHARLES RIFFENBURG\*  
MOVEMENT DIRECTOR..... MELISSA MCNAMARA

## Cast

EURYDICE ..... AMANDA JANE LONG  
ORPHEUS ..... CHLOE DZIELAK  
FATHER ..... PETER ROBEL\*  
A NASTY INTERESTING MAN /  
LORD OF THE UNDERWORLD ..... ADAM KANDER  
LITTLE STONE ..... TARYN WOOD  
BIG STONE..... ADAM THATCHER  
LOUD STONE ..... ELEANOR KATZ\*

## Artistic Team

PRODUCER..... MEG LOVE\*  
ASSISTANT DIRECTOR ..... PAUL DI CICCIO  
SCENIC DESIGNER..... MICHAEL LEWIS  
COMPOSER / SOUND DESIGNER ... JOSHUA WENTZ  
LIGHTING DESIGNER ..... AARON LICHAMER  
COSTUME DESIGNER ..... EMMA CULLIMORE  
PROPERTIES DESIGNER ..... NATASZA NACZAS  
TECHNICAL DIRECTOR ..... MICHAEL J. SANOW  
STAGE MANAGER..... DALTON LONG\*  
ASSISTANT STAGE MANGER..... JAKE FEDOROWSKI

\* BOHO COMPANY MEMBER

## Special Thanks

Katie Johansen for costume assistance, Kristin Johnson for vocals, Slick Jorgensen for lighting assistance, and Aviel Begley for stilt walking advice, Rob Rohn and the Marriott Theatre; The Illinois Arts Council, the Richard H. Driehaus Foundation, the Gaylord and Dorothy Donnelley Foundation, the Arts & Business Council of Chicago, Jean Zuiker, and Takeda Pharmaceutical Company Ltd, for funding this art; and the BoHo Board of Directors and Company Members, who strive daily to make this a place where artists can learn, grow, and fulfill their dreams.



EURYDICE is presented by special arrangement with SAMUEL FRENCH, INC.

This play was originally produced by Madison Repertory Theatre, Madison, Wisconsin, August 29, 2003. Richard Corley, Artistic Director, Tony Forman, Managing Director. And subsequently produced by Berkeley Repertory Theatre in 2004. Tony Taccone, Artistic Director, Susan Medak, Managing Director. And Yale Repertory Theatre, James Bundy, Artistic Director, Victoria Nolan, Managing Director. Produced by Second Stage Theatre, New York, 2007 Carole Rothman, Artistic Director.

EURYDICE is produced by special arrangement with Bruce Ostler, BRET ADAMS, LTD., 448 West 44th Street, New York, NY 10036.

# From The Artistic Director

What does it mean to lose someone you love, whether it be family or a significant other? What are you willing to do to get them back? Are you willing to walk through the gates of the underworld or wait indeterminately there in hopes of reclaiming them? Is the love you've lost really meant to be found again? There is something powerful and possibly productive in releasing yourself from loss in order to avoid being consumed by it... but letting go of love is never an easy task.



Sarah Ruhl's *EURYPIDICE* not only provokes these difficult and hugely emotional questions, but does so in a manner that allows artists a playground of possibility. She provides a beautifully poetic script that is paired with a universal story, and then asks artists such as ourselves to discover the best possible means of telling this story. It is why her adaptation of this myth is so captivating. It is an artist's dream - an incredibly compelling story with a back-drop that allows for interpretation, creativity, and imagination.

What you see here is a product of incredible imagination, fueled by the passion of love. Our telling of this story highlights both our desire to tell a story in an innovative and unconventional way, and also our hope to examine how love - and the loss of that love - impacts our everyday lives.

Peter Marston Sullivan  
Artistic Director, BoHo Theatre

## Upcoming BoHo Events

### FORMS OF BEAUTY FUNDRAISER

Tuesday, June 28th, 6:00 - 9:00pm

Hilton | Asmus Contemporary Art Gallery

Join us for food, drinks, auctions, and a special performance celebrating the bohemian pillar of beauty in all its forms. Admission is free!

### NEXT TO NORMAL

Book and lyrics by Brian Yorkey

Music by Tom Kitt

Directed by Theatre At The Center Artistic Director Linda Fortunato

Assistant Directed by Angela Alise Johnson

Music Direction by Ellen K. Morris

Performances begin August 20 at Theater Wit, 1229 W Belmont Ave

Visit [www.BoHoTheatre.com](http://www.BoHoTheatre.com) for more information

**BoHo**  
t h e a t r e  
*Faith · Beauty · Freedom · Love*

BoHo Theatre creates bold theatre that challenges convention through innovative storytelling and creates a shared community of artists and patrons in which all members are moved through art to make thoughtful, well-examined, caring relationships the highest priority in their lives.

## Company Board

ARTISTIC DIRECTOR      PRESIDENT  
Peter Marston Sullivan      Sara Coffau

EXECUTIVE DIRECTOR      VICE PRESIDENT  
Meg Love      Hatice Dinc

ASSOC. ARTISTIC DIRECTOR      TREASURER  
Peter Robel      Jelani Rucker

MARKETING DIRECTOR,      SECRETARY  
GRAPHIC DESIGNER      Mary Kate Robel  
Charles Riffenburg

ARTISTIC ASSOCIATE      MEMBERS  
Stephen Schellhardt      Nancy Bullock  
Richard Maxen

CASTING ASSOCIATES      Silvia Rota  
Jean Zuiker  
Molly Layton  
Stephanie Sullivan

OPERATIONS ASSOCIATE  
Mary Kate Robel

SOCIAL MEDIA COORDINATOR  
Ashley Hannon

STUDIO LIAISON  
Eleanor Katz

COMPANY MEMBERS  
Kaela Altman  
Peter Blair  
Greg Foster  
Dalton Long  
David Tibble  
Sean Thomas

## Artistic Affiliates

Christa Buck  
Justin Castellano  
Brandon Dahlquist  
Diane Fairchild  
Patrick Ham  
Theresa Ham  
Steve O'Connell  
Thomas J. Samorian

Cassy Schillo  
Danni Smith  
Jeremy Trager  
Megan Turnquist  
John Zuiker

## Emeritus Company

Stephen Genovese  
Ryan Guhde  
Thomas J. Samorian

[WWW.BOHOTHEATRE.COM](http://WWW.BOHOTHEATRE.COM)

/BoHoTheatre

@BoHoTheatre

# BIOGRAPHIES

## Cast



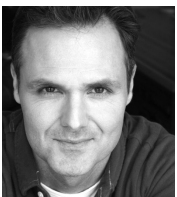
**AMANDA JANE LONG (EURYDICE)** made her Chicago debut with *BoHo* in 2013 as Susan in *VERONICA'S ROOM* and returned later that season as Constanze

in *AMADEUS*. Other Chicago credits include: Agatha in *ONE CAME HOME* (world premiere, Lifeline Theater); Elvire in *TARTUFFE*, and First Witch in *MACBETH* (Organic Theater Company). Originally from Portland, Oregon, Amanda's west coast credits include *ROMEO & JULIET* (Juliet), *THE TEMPEST* (Miranda), and *COMEDY OF ERRORS* (Adriana) with Bag & Baggage Productions, and a leading puppeteer in a national tour of *STELLALUNA* with Tears of Joy Puppet Theatre. Amanda trained at Northern Illinois University (MFA Acting), Southern Oregon University (BFA Acting), and abroad at the Moscow Art Theatre School. She is the Director of Programs and Marketing at Stage 773.



**CHLOE DZIELAK (ORPHEUS)** is thrilled to be making her *BoHo* Theatre debut. She was last seen in Collaboracion's final Sketchbook Festival in both *THE AFTER* and

*OPEN ARMS*. Previous Chicago credits include understudying and performing *Mouse*, *Agave*, *Helen*, and *Odd-Job Alice* in *ALL OUR TRAGIC* (The Hypocrites). Chloe is a proud member of The Hypocrites Community and in her free time she enjoys baking, learning Italian, and petting dogs. Much love to her new friends here at *BoHo* and her family, both biological and chosen, for their constant support and encouragement.



**PETER ROBEL (FATHER)** is happy to return to the stage with *BoHo*, where he has appeared in *DOGFIGHT* (Lounge Singer) and *I AM MY OWN WIFE* (Jeff Nomination-Actor,

principal role). Peter has appeared on many Chicago-area stages including Court Theatre, Duvry Lane Oakbrook Terrace, Chicago Opera Theatre, and Illinois Theatre Center. Also *BoHo's* Associate Artistic Director, he has directed *MYTHS & HYMNS*, *TARTUFFE*, *THE TEMPEST*, *THE MERCHANT OF VENICE*, *YERMA*, and *THE WINTER'S TALE*, and designed sound for *KISS OF THE SPIDER WOMAN*, *THE SPITFIRE*

*GRILL*, *THE RAINMAKER*, and *TARTUFFE*. Peter is represented by Paonessa Talent.



**ADAM KANDER (A NASTY INTERESTING MAN/LORD OF THE UNDERWORLD)** is grateful to return to the company and stage where he made his Chicago debut. Previous

*BoHo* credits include *PLAYING WITH FIRE*, *THE TEMPEST*, and *THE MERCHANT OF VENICE* (After Dark Award for Outstanding Performance). Additional Chicagoland credits include productions with the Metropolis Performing Arts Centre, Theo Ubique, Mozawa, Muse of Fire, The Journeymen, Livewire, Prologue, and MadKap Productions. Adam also served as a charter member of Eclectic Theater Company and Michigan Youth Theater. Many thanks to his family for their consistent support, and to everyone at *BoHo* for once again allowing him to muck about on their stage.



**TARYN WOOD (LITTLE STONE)** is an actor/musician who loves developing new works in Chicago. She works closely with Underscore Theatre Company and produces the

bimonthly Tiny Storefront Concert Series (previously the Uncommon Cabaret), which focuses on new musical theatre. Up next, you can catch her working on the Chicago Musical Theatre Festival at Victory Gardens.



**ADAM THATCHER (BIG STONE)** is thrilled to be working with *BoHo* Theatre for the first time. He earned his BFA in Musical Theatre from the State University of

New York at Fredonia and recently achieved his MFA in Acting from the University of Illinois at Champaign-Urbana. Adam has had the privilege of working with award-winning artists such as Renée Fleming, William Brown, and Victoria Clark, and has also performed in various musical theatre workshops in Shimoda, Japan, with Lyric Arts International; most recently, he performed with Montana Shakespeare in *THE MERCHANT OF VENICE* (Antonio). Some of Adam's favorite roles include El Gallo in *THE FANTASTICKS*, Stephano in *THE TEMPEST*, Mephistopheles in *DOCTOR FAUSTUS*, Dr. Treves in *THE ELEPHANT MAN*, and General Haig in *OH! WHAT*

*A LOVELY WAR*. He has premiered several new works, some of which have debuted in NYC. Special thanks to Wade for undying love, support, and kicks in the burn.



**ELEANOR KATZ (LOUD STONE)** is a proud *BoHo* company member and so happy to be back on the *BoHo* stage after playing Anna Hauptmann in *HAUPTMANN*. Originally

from New Jersey, Eleanor holds an MFA in Acting from East 15 Acting School in London, England, and a BA in Theatre from Muhlenberg College. Most recently seen as Charlotte Brontë in Promethean's production of *BRONTË*, other Chicago credits include work with Signal, Raven (Jeff Nomination - Best Supporting Actress - *THE TRIP TO BOUNTIFUL*), OPFT, and Redtwist. Voiceover credits include Microsoft, Hasbro, and Abbott Laboratories. Special thanks to Justin and their little stone, Zev, for the never-ending love and support. [www.eleanorkatz.weebly.com](http://www.eleanorkatz.weebly.com)

## Artistic Team

**PAUL DI CICCIO (ASSISTANT DIRECTOR)** is thrilled to be returning to *BoHo* after assistant stage managing *SCOTLAND ROAD* and *DOGFIGHT* last season. He recently received a degree in theatre directing from Columbia College Chicago. At Columbia, he directed *DOUBT: A PARABLE* by John Patrick Shanley and *PARADISE REGAINED* by Mark Ravenhill. He spends his free time watching television, eating Chipotle, and subverting oppressive social structures. He would like to thank his mentors for saturating him with inspiration on a daily basis. Most of all, he would like to thank Lady Gaga for enabling him to recognize his revolutionary potential.

**EMMA CULLIMORE (COSTUME DESIGNER)** is the resident costume designer for The Plagiarists and Chicago Tap Theatre, while also freelancing with other Chicago storefront companies, including *BoHo* Theatre, The Yard, and Quest Theatre Ensemble. Outside of Chicago, her designs have been seen at the Alabama Repertory Dance Theatre, the Ok-oboji Summer Theatre, and internationally in Havana, Cuba. Emma holds an MFA from the University of Alabama-Tuscaloosa, and in addition to her design work, serves as The Plagiarists' Director of Development.



**JAKE FEDOROWSKI (ASSISTANT STAGE MANAGER)** is ecstatic to be joining the BoHo family! He is currently studying stage management at Columbia College Chicago where he recently served as an assistant stage manager on *LOVE AND INFORMATION*, directed by John Green. He would like to thank everyone at BoHo for welcoming him with open arms and his family and friends for their overwhelming love and support. Enjoy the show!

**MICHAEL LEWIS (SCENIC DESIGNER)** is a native of Highland Park, Illinois. He attended Emory University, and has worked for the Shakespeare Theatre of New Jersey, Hope Summer Repertory Theatre, and PCPA-Pacific Conservatory Theatre. He has now returned to Chicago, where he has designed scenery for Rasaka Theatre Company and Tympanic Theatre Company. For more information, please visit [MichaelBennettLewis.com](http://MichaelBennettLewis.com).

**AARON LICHAMER (LIGHTING DESIGNER)** is a Chicago-based freelance lighting designer and technician. Previous design credits include *PIPPIN*, *PETER PAN*, *THE ODD COUPLE*, and *ALONE TOGETHER AGAIN* (Tibbits Summer Theater), *OH! WHAT A LOVELY WAR!* (Illinois Theater), and *REP LAB 2016* (Milwaukee Repertory Theatre). He has also worked as a season lighting technician for the Utah Shakespeare Festival (2014), lighting/electrics intern for the Milwaukee Repertory Theater's 2015/16 season, master electrician for multiple Illinois Theater & Krannert Center productions, and in many capacities for various storefronts in the Chicago market. He will be serving as master electrician for the Ohio Light Opera's 2016 summer season.

**DALTON LONG (STAGE MANAGER)** is very excited to be a part of BoHo's *EURYPIDICE!* Having graduated from Principia College with a BA in Theatre, Dalton has been in Chicago ever since, living the dream. A BoHo company member, his shows with them include *DOGFIGHT*, *SCOTLAND ROAD*, *ORDINARY DAYS*, *PARADE*, *MYTHS & HYMNS*, and *AMADEUS* (as ASM). His other credits includes Otherworld Theatre's *MESSINA 3004* (as SM). Dalton would like to thank the cast, crew, and design team for all of their hard work and dedication. A special thank you to his wonderful wife Katie for her constant love and support!

**MEG LOVE (PRODUCER)** is the Executive Director of BoHo and is proud to be bringing you another beautiful story. If you see her in the lobby before or after the show, feel free to strike up a conversation about your favorite BoHo show. After 8 years with the company, she has lots of stories to share! Meg holds a

BFA with an emphasis in stage management from Webster University. Past credits include productions with *OK-oboji Summer Theater*, *The Old Globe* in San Diego, *The Repertory Theatre of St. Louis*, *Noble Fool Theatricals*, and the *Chicago Gay Men's Chorus*. She'd like to thank the wonderful production team and cast for a great experience, and many thanks to her amazing fellow company members at BoHo. She also extends her deepest gratitude to her family, friends, and husband, Dan, for all their love and support.

**MELISSA McNAMARA (MOVEMENT DIRECTOR)** is excited to work with BoHo Theatre for the first time. Melissa has created over 25 original works, devised from her extensive movement vocabulary. She holds an MFA from Naropa University in Contemporary Performance, specializing in Body-Mind Centering, Developmental Technique, Viewpoints and Grotowski. In Chicago, Melissa has worked with Mozawa, Walkabout, Erica Mott, and tours with her Viewpoints inspired improv-duo, *CHAIRS*. Her work has been seen at the MCA, the Chicago Womens Funny Festival, Ingenuity Festival, Vancouver Improvisation Festival, the Miami International Performance Art Festival, and her solo show won an audience choice award in NYC. Melissa is an internationally recognized STOTT PILATES Instructor trainer, Pilates instructor for Cirque de Soleil for *KURIOS* in Chicago and owner of *mindart.core PILATES PERFORMANCE*. Catch her in *THE STUDIO*, a comedy webseries she co-wrote and produced with her partner in all things, Chris Bashen. A huge thanks to the cast/crew for their hard work. [www.thestudiowebseries.com](http://www.thestudiowebseries.com)

**NATASZA NACZAS (PROPERTIES DESIGNER)** This is Natasza's first production with BoHo Theatre. Previously she has worked at Edge of the Wood Theatre as the scenic painter for *SHE LOVES ME*, and as the set designer for *THE FANTASTICKS*. She is currently designing their fall productions of *THE SEAGULL* and *HOLIDAY*. Natasza is a graduate of The Theatre School at DePaul University and Rhode Island School of Design. When not doing theatre, Natasza is an Interior Designer and Facilities Planner at The University of Chicago Hospital.

**CHARLES RIFFENBURG (DIRECTOR)** is BoHo Theatre's Marketing Director, where he also directed *VERONICA'S ROOM* (Jeff Award nomination - Best Play) and *SCOTLAND ROAD*, and appeared onstage in *PYGMALION*, *GHOSTS*, *THE TEMPEST*, and *THE MERCHANT OF VENICE*. You can see him in the feature film *EMPTY SPACE*, currently showing on the festival circuit. He is also an independent graphic designer and illustrator working with the Chicago

theatre community to create memorable marketing campaigns; his clients include Emerald City Theatre, The House Theatre, Lifeline, Chicago Fringe Festival, Marriott Theatre, Remy Bumppo, and the League of Chicago Theatres. Charles holds an MFA in Performing Arts from the Savannah College of Art and Design as well as a BFA in Comic Books (it's true). Thank you to the BoHo team, and to Lisa, for being so supportive throughout this entire process. [GrabBagMedia.com](http://GrabBagMedia.com)

**MICHAEL J. SANOW (TECHNICAL DIRECTOR)** is excited to build the set for *EURYPIDICE*, his first production with BoHo Theatre. He's also built sets for *Mary-Archie* (where he is a company member), *Cole*, *Tympanic*, *Factory*, *Pavement Group*, *Sinnerman Theatre*, and many other Chicago storefront theatres. He is an Executive Producer for the TV pilot *COWL GIRL*, and the ongoing web series *UNDER COVERS*, both produced through Arrow & Key Productions, and is Executive Producer/Casting Director of the TV pilot, *FATTY* (currently in pre-production). He is currently serving his 21st year in the active duty military and eyeballing retirement at some point during the next 9 years. He has also appeared as a human prop on *CHICAGO PD*, as well as in the movies *CONTAGION* and *TRANSFORMERS 3*. He's a proud member of SAG-AFTRA. Enjoy the show.

**JOSHUA WENTZ (COMPOSER & SOUND DESIGNER)** is a multi-instrumentalist composer and performer living in Chicago. Driven by a love for all musical genres and styles, he enjoys developing new and interesting collaborative projects and improvisational performance techniques with local and remote artists. You can hear more from him at [Sidedown.com](http://Sidedown.com)