



BoHo

Bohemian Theatre Ensemble

boho theatre

dirty
BLONDE

by Claudia Shear



april 1 - may 1, 2011

PRESENTED AT

theater
Wit



ARTISTIC DIRECTOR	P. Marston Sullivan
EXECUTIVE DIRECTOR	Peter Blair
ARTISTIC ADVISOR	Stephen M. Genovese
EXECUTIVE ADVISOR	Thomas J. Samorian
ASSOCIATE ARTISTIC DIRECTOR	Peter Robel
MANAGING DIRECTOR	Ryan Guhde
CASTING COORDINATOR	Stephanie Sullivan
CASTING ASSISTANT	Rebecca Mauldin
BOARD/COMPANY SECRETARY	Mary Kate Robel
MEDIA DIRECTOR	Charles Riffenburg ^{IV}
COMPANY MEMBERS	Anna Hammonds, Sean Thomas

BOARD

Stephen Genovese, president; Thomas Samorian, vice-president; Kaela Altman; Steve Goodman; Robert Kimmeth; Richard Maxen; Bob Turner, Jean Zuiker

ARTISTIC AFFILIATES

Anthony Apodaca, Brenda Didier, Patrick Ham, Theresa Ham, Jon Steinhagen, A. Scott Williams, and John Zuiker



MISSION & VISION

BoHo Theatre's mission is to create theatre that incorporates the arts as a whole — Art for art's sake. Our vision is to challenge convention through literary originality and eclectic expression while fostering an ever-evolving artistic environment in which people are inspired to learn, think, dream, and feel. To teach others and ourselves how to expand, create, and present art through theatre while reveling not only in the process, but also in the journey.



Bohemian Theatre Ensemble is a not-for-profit 501 (c) 3 organization. Our events and productions are made possible by your generous donations and patronage. Please visit our website at www.bohotheatre.com or speak with our house manager to learn about more ways to contribute time, money, and talent to helping support art in Chicago. Any monetary donations are tax-deductible to the fullest extent of the law. Thank you!

BoHo Theatre: Bohemian Theatre Ensemble
PRESENTS

DIRTY BLONDE

by Claudia Shear

DIRECTED BY

Stephen M. Genovese

CAST

(IN ALPHABETICAL ORDER)

FRANK WALLACE, ED HEARN, AND OTHERS Nicholas Bailey
JO AND MAE. Anne Sheridan Smith
CHARLIE AND OTHERS. David Tibble

PRODUCTION CREW

MUSICAL SUPERVISOR

Nick Sula

SCENIC DESIGN

Andrew Marchetti

LIGHTING DESIGN

Scott Pillsbury

COSTUME DESIGN

Theresa Ham

PROPERTIES DESIGN

Cassy Schillo

STAGE MANAGER

Meg Love

PRODUCER

Peter Blair

Dirty Blonde is produced by special arrangement with
Samuel French, Inc. New York City.

PARTIALLY SUPPORTED BY GRANTS FROM



GAYLORD AND DOROTHY DONNELLEY FOUNDATION

PERFORMER BIOGRAPHIES

(IN ALPHABETICAL ORDER)



NICHOLAS BAILEY | FRANK WALLACE, ED HEARN, AND OTHERS

Nicholas is making his debut with BoHo. Hailing from Excelsior, MN, Nicholas graduated from Denison University with a degree in Creative Writing and Political Science. There he appeared in numerous mainstage and independent productions, writing several of the latter. He also performed in the school's improv troupe and continues to study improv at iO. In Chicago, Nicholas has worked with Inconceivable Theatre, Gorilla Tango Theatre, and has been in several films by Family Squid. His play, *The Narrows*, was recently workshopped in the Fresh Eyes Project with Red Tape Theatre. Nicholas is represented by Big Mouth Talent.



ANNE SHERIDAN SMITH | JO AND MAE

Anne is thrilled to be working with BoHo and these very talented actors. Anne grew up in Chicago and appears in theaters and other venues around the city. She's recently enjoyed pretending to be a rock star as a singer/showgirl for the late-night theatre show, *The Game Show Show... and Stuff!*, playing at the Chopin Theatre. Other productions include: Strawdog Theatre's production of *The Good Soul of Szechuan*, dir. Shade Murray; *The Juniper Tree* (City Lit), dir. David Cromer; Nurse Ratched in *One Flew Over the Cuckoo's Nest* (Open Eye); Abigail Adams in *1776* (Signal Ensemble—Jeff Award, Best Musical Production); Rose Stopnick u/s in *Caroline, Or Change* (Court Theatre). She is a member of Foiled Again (vocal trio) with Rob Lindley, Allison Bazarko and Doug Peck on piano. She would like to thank, Ben, for his love and support. "You live only once, but if you do it right, once is enough." —Mae West



DAVID TIBBLE | CHARLIE AND OTHERS

David is thrilled to be returning to the BoHo stage, where he was last seen as Caliban in *The Tempest*, and excited to be making his debut at the beautiful new Theater Wit space! Other theatrical credits include: Decker in *Bleacher Bums* (Metropolis), Laroque in *Madame X* (CCPA), Romeo in *The People vs. Friar Lawrence* (Second City at Chicago Shakespeare) and Bob Cratchit in *A Christmas Carol* (Metropolis). Film credits include the starring role in the recently released independent film *D.I.N.K.s*. David has also appeared in commercials for Budweiser, Luna Carpet, and the U.S.A.F. David would like to thank Steve, Peter and everyone at BoHo for this opportunity, as well as his family for their continuous support. Love to Michelle.

PRODUCTION CREW BIOGRAPHIES

CLAUDIA SHEAR | PLAYWRIGHT

Ms. Shear started her theatre career with her one-woman play, *Blown Sideways Through Life*, a comedy that chronicled the 64 jobs she supported herself with before her acting career took off. Shear received a special Obie Award and a Drama Desk Award nomination for writing and starring in the play. She followed *Sideways* with *Dirty Blonde*, which originated at the New York Theatre Workshop in 1999 before going on to Broadway. The play received five Tony nominations, including Best Play and Best Actress in a Play nods for Shear, and Direction of a Play for James Lapine, who staged the production. Shear premiered her latest play, *Restoration*, at La Jolla Playhouse in La Jolla, California in June 2009 and in New York in May 2010. In between her stage work, Shear has appeared in the HBO Movie *Earthly Possessions*, as well as small roles in *It Could Happen To You* and *Living Out Loud*. Shear has also written various pieces for *The New York Times*, *Vogue*, *Glamour*, *Travel and Leisure*, *Psychology Today*, and the online magazine *Underwire*.

STEPHEN M. GENOVESE | DIRECTOR

Steve has spent the better part of 30 years involved in theatre in one aspect or another. From stage direction to technical direction, costuming to props, acting to writing, being involved on so many levels has helped him officiate in the positions he currently holds as Artistic Advisor and founding Artistic Director at BoHo Theatre. Steve has performed at or worked with The Marriott Theatre, Pheasant Run Dinner Theatre, Court Theatre, and Stage Right Theatre, to name a few. His works as director and/or designer for BoHo include the critically acclaimed hit musicals *The Wild Party*, the Jeff-winning *SideShow*, *Jekyll & Hyde*, and *The Glorious Ones*, and the plays *I Am My Own Wife* (co-director) and *Gross Indecency: The Three Trials of Oscar Wilde*.

NICK SULA | MUSICAL SUPERVISOR

Nick is proud to return to Bohemian Theatre Ensemble! BoHo credits: *Hello Again*, *The Glorious Ones* (Jeff Nomination), *La Cage aux Folles*, *Jekyll & Hyde*, *Songs for a New World*, pianist for *Side Show*, *The Life*, *Wild Women of BoHo*. Other work includes Porchlight: Music director for *The Teapot Scandals*, pianist for *Ragtime*, *The Secret Garden*, *Sweeney Todd*; Light Opera Works: Assistant conductor for *The Music Man*, *Oklahoma!*; White Horse Theatre: *Merrily We Roll Along* (Jeff Citation). Cabaret: *7 Deadly Sins of a Diva*, *Not At My Audition*, *Desperate House Managers*, *I'll Stop the World and Belt With You*.

ANDREW MARCHETTI | SCENIC DESIGNER

Andrew is honored to be working with BoHo Theater again, having designed *Bernarda Alba*, *The Musical*; *Gross Indecency*; and *A Winters Tale* with them previously. Additionally, Andrew has designed for numerous Chicago companies (The Plagiarists, Oracle Theater, City Lit) and various productions including *Bus Stop*, *The Larime Project*, *Wayside Motor Inn*, *Bad Guys in Suits*, *The Dining Room*, *Fiddler on the Roof* and *My Fair Lady* to name a few."

SCOTT PILLSBURY | LIGHTING DESIGNER

Since arriving in Chicago in 2000, Scott has designed or assisted for several different theaters and dance companies: Albany Park Theater Project, Ballet Chicago, Beverly Theater Guild and Arts Center, Colaboraction, Five Star Productions, GI Alliance, Gift Theatre, Prevail Dance Company, Pure Renditionz, Shapeshifters, Strange Tree, Theatre of Western Springs and Theater Wit. Films: *Dead in the Water*, *Lac Du Flambeau*, *Something to Eat*, and *Tapioca*.

THERESA HAM | COSTUME DESIGNER

Theresa Ham is a Chicago based costume designer. Her previous BoHo credits include *The Wild Party*, *Side Show*, *Yerma*, *Edward II*, *The Life*, *Songs for a New World*, *The Glorious Ones* and *The Elephant Man*. Other Chicago credits include: *A Civil War Christmas* and *Souvenir* with Northlight Theatre, *Hansel and Gretel* and *Die Fledermaus* with DePaul Opera Theatre, *The Lady's Not for Burning* with Theo Ubique and many others. She is an adjunct faculty member with the City Colleges of Chicago at the Wilber Wright Campus. Theresa won the 2010 Joseph Jefferson Award for Outstanding Costume Design (non-equity) for BoHo's *The Glorious Ones*. Upcoming projects include *Cosi Fan Tutti* with the Ryan Opera Center at Lyric Opera Chicago and *Sweeney Todd* at Drury Lane Oakbrook. She lives in the Beverly neighborhood with her wonderful husband and family.

CASSY SCHILLO | PROPERTIES DESIGNER

It is a pleasure to be returning to BoHo's company for *Dirty Blonde!* Recently earning a BFA in Stage Management from University of Wisconsin-Whitewater, she is excited to continue that passion in Midwest theatres. Recent credits include Properties Master for BoHo's *The Elephant Man* and Sound Designer for The Milwaukee Chamber Theatre's *Moon Over the Brewery*.

MEG LOVE | STAGE MANAGER

Meg Love is so very excited to be back at BoHo! After stage managing *Songs for a New World* in the runs at Theatre Building and Theatre on the Lake, *Bernarda Alba*, *La Cage Aux Folles*, *The Glorious Ones* and *Hello Again*, Meg is proud to be part of another great BoHo production. She'd like to thank the wonderful production team and cast as well as her family, friends and Dan for their love and support in all that she does.



SPECIAL THANKS GO OUT TO...

The Illinois Arts Council, a state agency, the Richard H. Driehaus Foundation, the Gaylord and Dorothy Donnelley Foundation, The Alphawood Foundation, The Arts & Business Council of Chicago, ArtsWork Fund for Organizational Development, The Saints for all their financial and artistic support, and generous matching donations from Jim Beam and Takeda Pharmaceuticals;

The BoHo Board for the time and energy they take out their lives to make this company even better; Rick Julien and Brandon Dahlquist;

Adam Ford and The Marriott Theatre; Theater Wit for welcoming us;

BoHo company members who strive daily to make this a place where artists can learn, grow, and fulfill their dreams;

and, anyone else who we may have neglected to thank at the time this was printed.

BECOME A PART OF THE ART!

BoHo Theatre is growing quickly! Currently in our seventh season, we are now a resident company at the new Theater Wit, which increases our capacity and visibility, as well as maintaining our home at the Heartland Studio for new works, rehearsals, and to foster up-and-coming young theatre companies. As part of our transition, we are actively seeking board members to join our outgoing and artistic family.

WHAT DOES BEING A BOARD MEMBER MEAN?

Board members play a strong part in maintaining the BoHo vision and mission, building community relationships, developing resources, and monitoring our image and marketing effectiveness.

WHAT DO I GET BY BEING ON THE BOARD?

Board members get to attend open rehearsals as part of the creative process, participate in talk-backs with casts and designers, attend special receptions for each show, take part in our new works program, be part of creative brainstorming committees, and, of course, get free subscriptions to the BoHo season.

For more information, visit us online at www.bohotheatre.com/jointheboard, or contact Peter Marston Sullivan at marston.sullivan@bohotheatre.com



JOIN BOHO FOR OUR ANNUAL BENEFIT

Enjoy food, music, and festivities, along with previews of our exciting 2011/12 Season, at BoHo Theatre's Annual Benefit. Rub elbows with BoHo company members and artists from throughout our past seven seasons while helping us raise money to continue offering quality artistry and engaging theatrical experiences

BoHo ANNUAL BENEFIT
JULY 18TH @ THEATER WIT
CELEBRATING BOHO'S 2011/12 SEASON:

Pippin

By Stephen Schwartz and Roger O. Hirson
October 15 – November 20, 2011

The Rainmaker

By N. Richard Nash
April 6 – May 6, 2012

Tartuffe

By Moliere, Adapted by Ranjit Bolt
January 13 – February 12, 2012

Floyd Collins

By Tina Landau and Adam Guettel
June 15 – July 15, 2012

COMING UP NEXT AT BOHO THEATRE...

BEAU: "SOME THINGS ARE PRICELESS."
ALTAGRACIA: "NOT PRICELESS—SACRED."

Primitivo, a young man born into physical disfigurement, has been sprung from the hospital by his sister, Altagracia. The two have run away to an empty beachhouse, where Primitivo is in training to become "the most beloved and famous person in the world" by swimming out to touch the sun. But the arrival of a drifter named Beau disrupts their plans. He too is attempting an impossible task—trying to forget his past.

"Sanchez writes with the imagery of a magic realist and a sweetly poetic sensibility if not a poet's lyricism" —*The New York Times*

JUNE 24 – JULY 24

Visit www.BoHoTheatre.com for tickets and more information.



Stage Left Theatre presents LeapFest 8

See what's next in Chicago theatre! Join Stage Left Theatre for an 8th smash year, when five new plays "take the leap" in development in this three week festival of politically-minded new work.

Blessed Assurance
the story of Boston Corbett, slayer of Booth
by Randall Colburn

Make Sure it's Me
by Kate Wenner

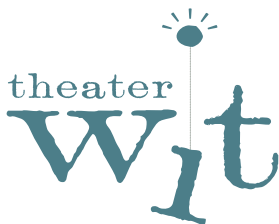
The News All the Time
by Steve Spencer

Thirst
presented in partnership with **Rasaka Theatre**
by Anita Chandwaney and M.E.H. Lewis

Underneath
by Rob Smith



June 16 — July 3, 2011
at Theater Wit



MISSION: SMART ART

Theater Wit dedicates itself to producing plays that address contemporary issues with humor and intelligence. With groundbreaking new plays and classic works, Theater Wit seeks to engage its audiences with wit and wisdom.

Theater Wit recently finished a \$1.3 million renovation on the old Bailiwick Arts Center. It will be home to Theater Wit, resident companies, and numerous visiting artists, creating a welcoming and professional home for the neighborhood to experience Chicago's diversely talented theater scene.

GET A FLEX PASS



To take full advantage of all the productions and companies in the space, you can purchase a FLEX PASS for any and all productions in the building. You can use it to purchase online or at the box office. One pass will let you see up to 10 shows at Theater Wit. Bring a date to 5 shows or a crowd of 10 to one show--it's up to you. Make sure you are on our mailing list to get this great ticket offer for \$200 -- a savings of up to 35% off. Call our box office at 773-975-8150 for details or visit us online at theaterwit.org.

RESIDENT AND VISITING SHOWS THIS SEASON AT THEATER WIT

Bohemian Theatre Ensemble

Dirty Blonde
April 1 – May 1

InFusion Theatre

Soul Samurai
April 25 – June 5

Griffin Theatre

No More Dead Dogs
April 28-June 19

New Millenium Theatre Co.

Cubicle: An Office Space Musical
April 29 – June 10

Teatro Vista

Freedom, NY
May 7-June 12

Stage Left

Leapfest
June

Bohemian Theatre Ensemble

Icarus
June 30 – July 23

Timeline Theater

A Walk in the Woods
August 22 – November 20

**Call the Theater Wit Box Office for tickets 773-975-8150 or visit us
online at theaterwit.org**

THEATER WIT STAFF

Jeremy Wechsler.....*Artistic Director*
David Wechsler.....*Company Manager*
Mercedes Rohlf's.....*Grant Director*
Nadia Garofalo, Mikey Laird
Box Office
Jay Kelly, L.C. Williams & Assocs
Press Relations
Michelle D. Miller and John D.
Neumann, Jones Day.....*Legal*
Richard Kasemsarn.....*Architect*
David Trent Zilmer
General Contractor

BOARD OF DIRECTORS

Kathryn Stieber*President*
Paul Danao*Vice-President*
Charles Hornewer.....*Treasurer*
Steve Owen*Secretary*
Todd Goldberg
Ashley Nelson
Neal Smyth
Bruce Wechsler

With so much going on at Theater Wit, we recommend you get our e-newsletter to keep up. Get updated news on our resident companies, pre-production insights, interviews and photos. You can also be our bestest ever e-pals by visting us at facebook.com/theaterwit.

Fill out a mailing list insert and give to any bartender, usher or house manager to get a free piece of chocolate, or sign up online at theaterwit.org/join.

WitRESIDENCE

PROVIDING A HOME TO CHICAGO'S THEATERS

Each season, Theater Wit offers its space to one or more companies to produce in year round. The WitRESIDENCE program combines the principles of a cooperative and a traditional rental house to create a more cohesive, professional, and efficient nonprofit environment. In its facility, Theater Wit will play host to other Chicago theater companies on a minimum two-year basis. The resident companies will volunteer their time for space maintenance, share audience development initiatives, and gain a home under one roof. Meet our resident companies!

BOHEMIAN THEATRE ENSEMBLE

BoHo Theatre's mission is to create theatre that incorporates the arts as a whole — Art for art's sake.



BoHo's vision is to challenge convention through literary originality and eclectic expression while fostering an ever-evolving artistic environment in which people are inspired to learn, think, dream, and feel. To teach others and ourselves how to expand, create, and present art through theatre while

reveling not only in the process, but also in the journey. BoHo's season is chosen to highlight and explore the four bohemian pillars of Truth, Beauty, Freedom, and Love. Four shows, four pillars (and maybe a holiday musical thrown in for good measure!)

STAGE LEFT THEATRE

Stage Left Theatre's mission is to develop and produce plays that inspire debate about political and social topics. We focus on presenting complicated issues in the context of an engaging story, without prescribing a single point of view. We attempt to spark respectful debate about the issues most relevant to our community, and activate audiences to continue those conversations beyond the walls of the theatre. Stage Left also works to inspire playwrights to address political and social themes through our Downstage Left new work development program.



theatre. Stage Left political and social work development

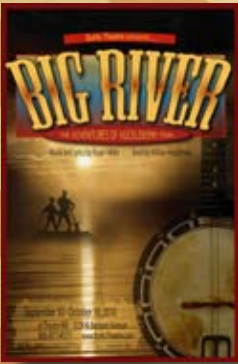
THE FOUR PILLARS OF THE BOHO SEASON

TRUTH, BEAUTY, FREEDOM, LOVE

As we choose each season, the Artistic Advisory Committee at BoHo (made up of the Artistic Director, Executive Director, Associate Artistic Director, and various company members) considers a wide variety of pieces in its selection.

It casts a net out as wide as possible to see what choices might be interesting for the new season. One of the most integral parts of choosing the season is how a given piece exemplifies one of the pillars of BoHo. These pillars—**Truth, Beauty, Freedom, and Love**—were implemented from the start of BoHo as a way to maintain the **Bohemian ideals** while allowing for structure in the selection process. After many other elements are considered, the Artistic Director chooses a season where each piece represents a pillar (four pillars; four shows in a season).

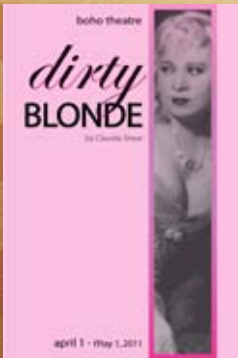
Thank you for joining us to explore Love in *Dirty Blonde*.



BIG RIVER
by Roger Miller
& William Hauptman
Sept 10 – Oct 10, 2010



THE ELEPHANT MAN
by Bernard Pomerance
Jan 7 – Feb 6, 2011



DIRTY BLONDE
by Claudia Shear
April 1 – May 1, 2011



ICARUS
by Edwin Sanchez
June 24 – July 24, 2011

WWW.BOHO THEATRE.COM
THEATER WIT BOX OFFICE 773-975-8150